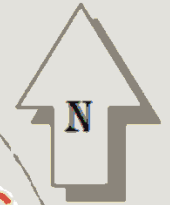


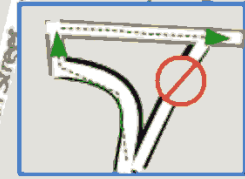
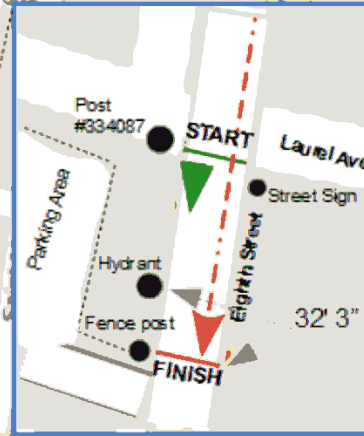


Certification # MD14017LMJ
Effective 9-22-2014
Through 12-31-2024

LAUREL, MARYLAND
39°06'17.76"N, 76°51'25.26"W



START/FINISH INSET



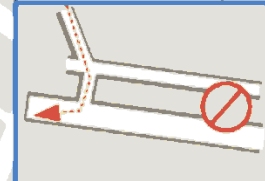
Mile 1 - on Park Ave, 10' 5" North of Pole # 812504 on West side, marked with PK nail

Mile 3- on Park Ave, 50' 1" West of hydrant closest to Eighth St intersection on South side, marked with PK nail

START on Eighth Street heading South, even with Pole # 334087 on the West side and 51' 1 1/2" from the Laurel Ave/ Eighth st, Street Sign on the East side

FINISH - on Eight Street, approaching from the North, even with corner fence post leading to McCullough Field Parking area on West side and 32' 3" South of hydrant on West side

Mile 2- On the River Walk Trail, 76' 5" North West of the manhole set on the concrete pad on the South side of the trail. Marked with PK nail



bluecheetah
sports timing
Measured by:
Nathan Porch

